

ALPHA

PRODUCTION SOLUTIONS

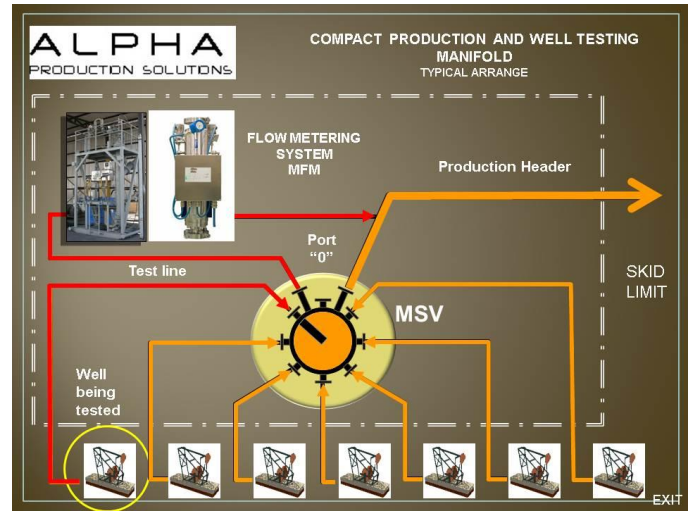
Compact Manifold

ONE EQUIPMENT, YOUR COMPLETE SOLUTION for the Production and Well Testing Manifold

The Multiport Selector Valve (MSV) Compact Manifold includes electric actuator, inlet and outlet pipes, valves, instrumentation, electrical facilities and operation platforms provided on a structural skid as a self-contained unit for easy procurement, transportation, installation and operation

The complete and compact solution fabricated, assembled and tested in factory is received in the field ready to install over a pad, for immediate well connection and subsequent operation. The compact and spaced saver designs make this concept ideal for onshore/offshore application.

In-shop fabrication, inspection and FAT results in a more reliable and cost effective solution reducing the messy and costly field material and labor management.



Integration Level

- **Manual System**
In the Manual System, the MSV operation is done manually using a lever type positioning device. The manual system does not take full advantage of the concept but it is still a competitive solution compared to the conventional manifold due to the compact design and readiness for future automation.
- **Automatic System**
The automatic System may include instrumentation for pressure, temperature and flow measurement equipment as required integrated and controlled by a local PLC that allows satellite installation and remote operation with automatic well testing routines.

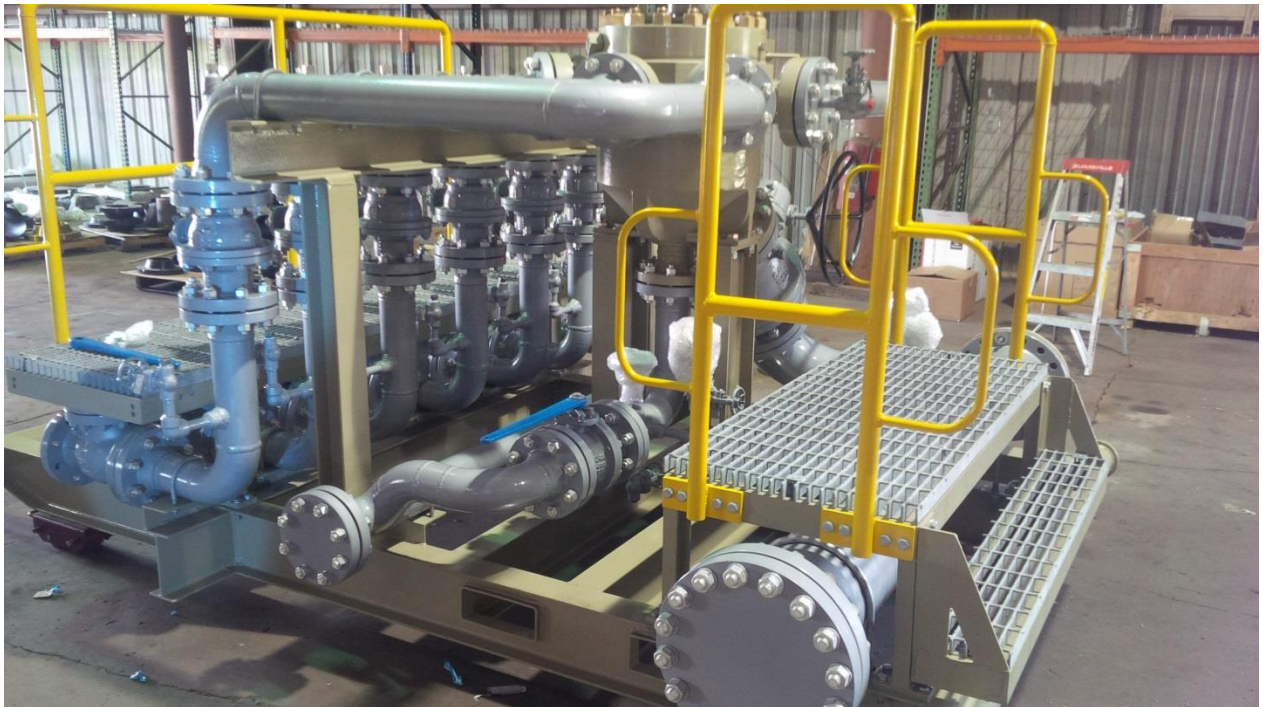
MSV size and rating, connecting pipes and valve sizes and type, and material of construction depend of the application and customer requirement with a wide range of choices to fit the specific service.

ALPHA

PRODUCTION SOLUTIONS

Main features

- Modular, Compact and self-contained.
- Low maintenance.
- Combined solution Multiport Selector Valve-Flowmeter facility
- Compact design and reduced footprint = Less ecological impact.
- No concrete foundation required.
- In shop fabrication and FAT: Systems ready to install, connect and use.
- Several Skids connected in tandem provide a cluster for 14, 21, 28 or more Wells.



MULTIPOINT SELECTOR VALVE SKID